

# FIRST-TIME RIDER SAFETY



## PROGRAM SAFETY TIPS



# School Bus First-Time Rider Safety Tips



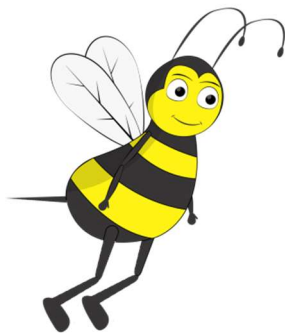
## CONTENTS

Bus Symbols	1
Cancellations	2
Bus Stop	2
Danger Zone	3
Identification Program	3
On the Bus	4
Pick up your child	4
Learn More	5

## IMPORTANT REMINDERS

It is important to know your child's bus information including; bus operator name, route number/symbol, bus stop location and scheduled pick-up/drop-off times.

- Have your child arrive at the bus stop 5-10 minutes before their pick-up time.
- Assume responsibility for your child's behavior while waiting to board the bus.
- Understand that the bus is viewed as an extension of the classroom and, as such, student discipline falls under the responsibility of the school Principal.
- Complete and update any medical/life-threatening information for your child (if applicable) and submit this information to their school.



## BULLY FREE ZONE

We promote school buses as a BULLY FREE ZONE and there is ZERO tolerance. Signs are located inside the bus as a reminder to students. On-going training is provided to drivers to recognize the signs of bullying.

## Route Numbers

We have adopted school Bus Route numbers for both regular and special needs buses. The Route Numbers are displayed on the second window on the door side of the school bus. The Route Numbers are a reference point for both parents and students.



# School Bus Safety Tips



## BUS CANCELLATION AND DELAYS

The decision to cancel school buses is a shared responsibility between STWDSTS and the school bus operators. The process incorporates real-time weather/road condition reports from several spotters throughout the district as well as the most current weather information available.

INCLEMENT WEATHER
<b>BUS DELAYS</b>
WEATHER ZONE
<b>NOTIFICATIONS</b>

**Remember**  
*"we wait for the bus,  
the bus does not  
wait for us!"*

### AT THE BUS STOP

**Never play around when you are at your school bus stop.**

**When it is winter, do not stand on or play on snowbanks.**

**If you drop something under the bus do not try to get it back yourself.**

**Never go under, or reach under the school bus for any reason.**

#### INCLEMENT WEATHER

In the event of inclement weather buses will be cancelled in the morning and the afternoon.

#### NOTIFICATIONS

All weather decisions are relayed to the public no later than 6:30 am. In addition to the local radio stations, weather decisions are also posted at [www.stwdsts.ca](http://www.stwdsts.ca) and click on "Delays and Cancellations") and Twitter @STWDSTS

#### BUS DELAYS

A bus may be delayed for various reasons such as railway crossing, traffic conditions, road closures, weather related etc. School bus delays of more than 10 minutes will be reported here: ([www.stwdsts.ca](http://www.stwdsts.ca) and click on "Delays and Cancellations").

#### WEATHER DIVISIONS

STWDSTS Service area is split into Four Divisions. Please refer to [www.stwdsts.ca](http://www.stwdsts.ca) to determine what zone you live in as well as what zone your school is located in.

## WALKING TO THE BUS STOP

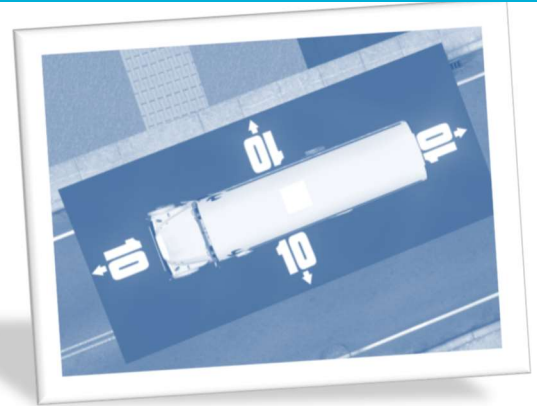
- Parents, all kindergarten students must be accompanied to and from the bus stop by an adult, guardian, or another responsible person.
- You must be 5 to 10 minutes early arriving to your bus stop. The school bus driver has a lot of students to pick up and can't wait for you if you are late.
- Parents, you should take your child to see their school before the first day. The bus may stop at other schools before or after your child's school.
- It will help your child to know what their school looks like so that they do not miss getting off at the right school.
- Also, teach your child the name of their school so they can tell the bus driver.



## THE DANGER ZONE

The danger zone is an imaginary rectangle that shows you the dangerous areas around the school bus. The danger zone goes 10 steps all the way around the bus.

The most dangerous areas are in front of the bus, and behind the bus, because the driver can't see you. The bus tires are also dangerous so make sure to always stay away from them. Never go behind, or directly in front of the school bus.



## STUDENTS IDENTIFICATION PROGRAM

**STWDSTS** has implemented a student I.D. program for students that need to be met by a parent or other responsible person and for those students who must be met and who transfer to another bus.

### NEED TO BE MET TAG



This tag's designed to assist school staff in placing JK, SK and other school identified students on their correct bus at the end of the school day.

It also serves as a visual indicator that the student needs to be met by a parent/guardian.

### TRANSFER TAG



This tag indicates that the student will be **transferring** to another school bus during the ride.

This tag's designed to assist school staff in placing JK, SK and other school identified students on their correct bus at the end of the school day. It also serves as a visual indicator that the student needs to be met by a parent/guardian.

## RIDING ON THE SCHOOL BUS



Always sit with your back in the seat, facing forward.



Do not snack on the bus.



Do not open the school bus windows without permission from the driver.

If your window is open, keep everything, including your arms and head, inside the bus. There are things like telephone poles, trees, cars, and trucks that could hurt you.

## PICKING UP YOUR CHILD

Parents, you must be 5 to 10 minutes early for pickup at the end of the day. Wait on the side of the road that the bus stops on. Do not stand away from the bus in groups.

When your child is getting off, approach the bus door to receive him or her. This will ensure your child makes visual contact with you, their guardian, or the person responsible for meeting them at the bus stop, before they get off the bus.





**ADDRESS**

66 Arrow Road, Unit B  
Guelph, ON N1K 1T4

**Phone:**

519-824-4119

Twitter: @STWDSTS

**E-mail:**

[askus@stwdsts.ca](mailto:askus@stwdsts.ca)

We're on the Web!  
[www.stwdsts.ca](http://www.stwdsts.ca)



**NEED SOME EXTRA REVIEW?**

Additional safety information for students and parents can be found in the video, "Buzzy the Bee's Safety Certificate!"

You can re-watch Buzzy the Bee's safety video on YouTube and Vimeo.

▪ **YOUTUBE:**

Search: "Bus Safety-Sécurité en autobus"

Or visit the OECM Youtube channel at:

<https://www.youtube.com/channel/UCNPbx8vUUAHX3sDxb33SDjA>

